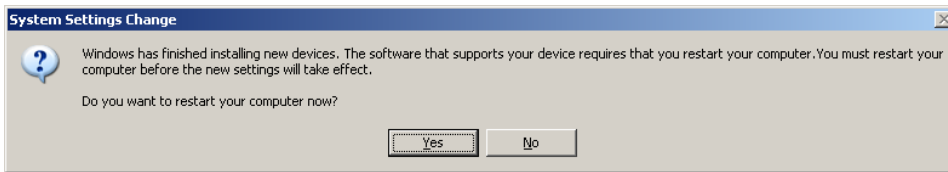


Installation of Sierra Wireless Compass 885 Modem

Insert your SIM into the modem
Insert modem into a USB port on your computer.

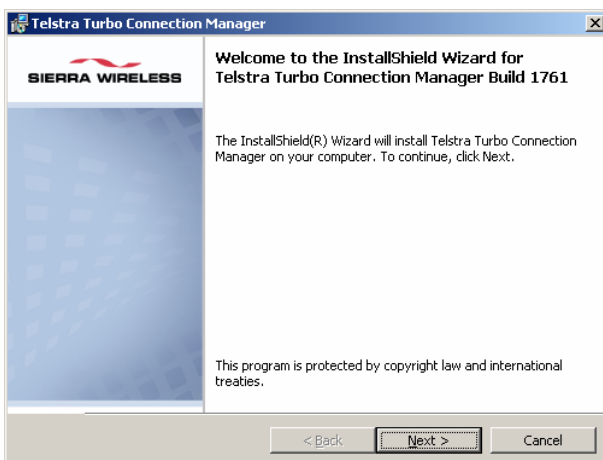


Restart computer

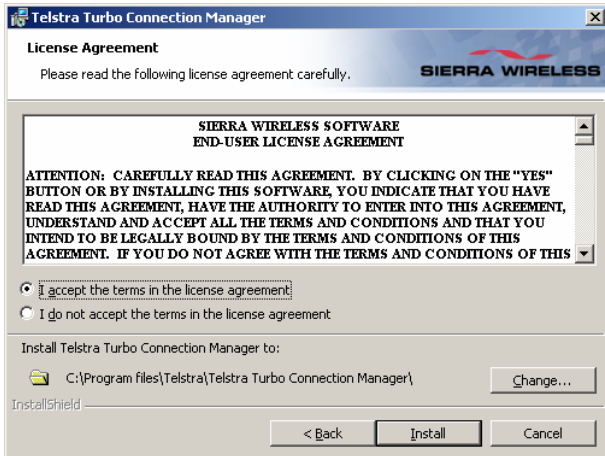
Installer runs from the combined modem and USB memory stick



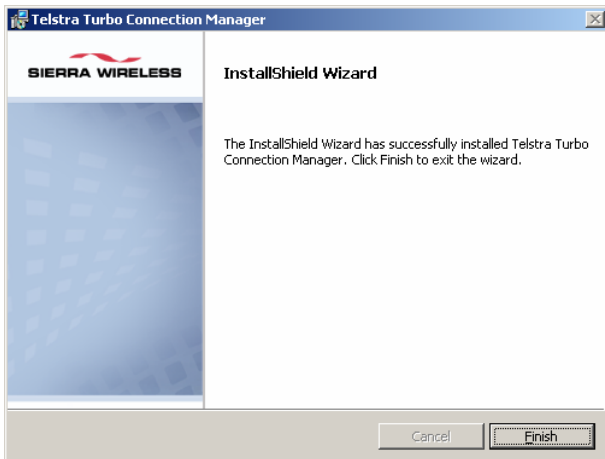
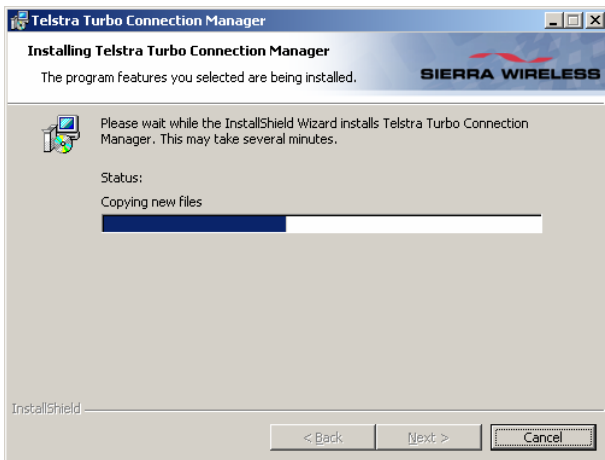
Click OK



Click Next



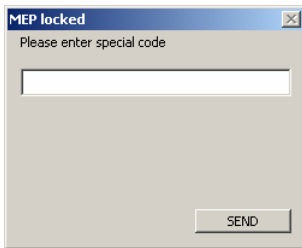
Accept the terms and click Install



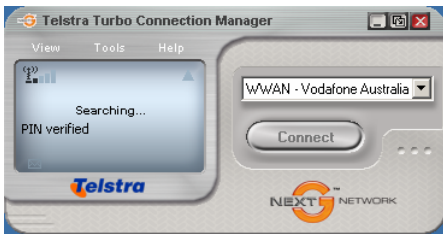
Click Finish

Several "Found New Hardware" popups appear at bottom right of screen

Then the Connection Manager runs



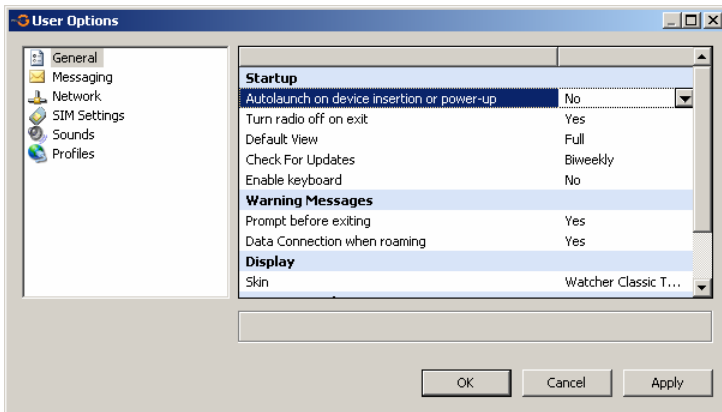
If "Incorrect SIM" appears, enter the "Unlock code" supplied with the modem.



It is vital that the Connection Manager is installed initially, because it installs the modem drivers. It is also vital that the Connection Manager does not run when the FLEET server is running, because the Connection Manager takes over control of the modem, whereas the FLEET server needs complete control of it.

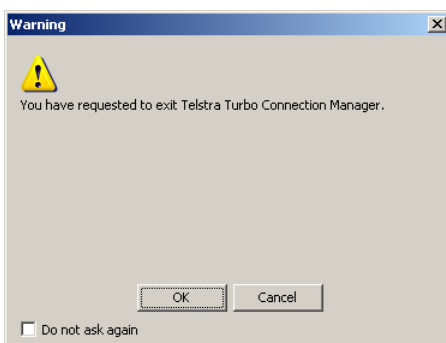
Disable the Connection Manager from starting automatically...

Menu... Tools... Options... General... Startup... Autolaunch on device insertion or power-up... select No



Press OK

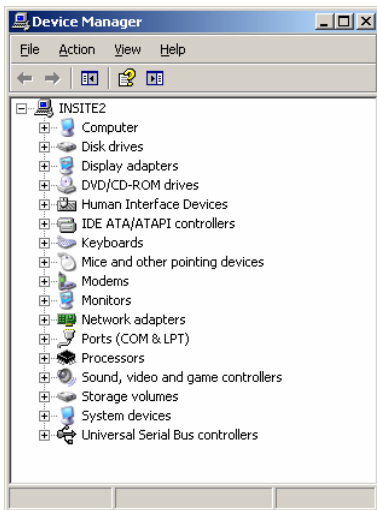
Close "Turbo Connection Manager" using the red cross on the top right hand corner



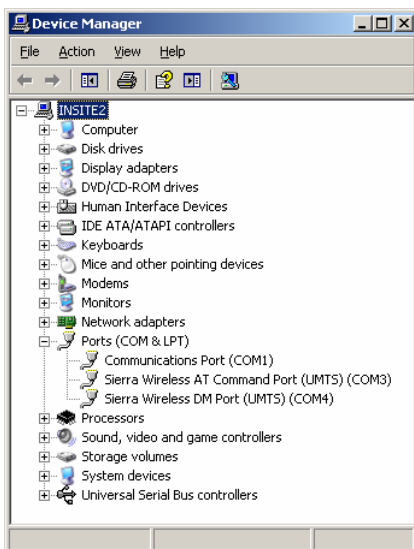
Press OK

To confirm that the modem is installed properly...

Menu... Start... Settings... Control Panel... System... Hardware tab...Device Manager button...



Click on the + to the left of "Ports (COM & LPT) to open the tree



Notice the presence of "Sierra Wireless AT Command Port (UMTS) (COM3)"

Note that COM3 may be another port number, eg. COM8 etc. This is OK, as the FLEET server will find the correct port when it begins to run.